

AI real estate management simulator Now available for real estate owners

~First in the industry, AI based renovation effect forecast for the future rent assessment~

COMPASS Co., Inc., a subsidiary of Casa, will start offering today a new service "AI SCOPE" for real estate owners, which can predict the future cash flow and renovation effect of investment real estate by artificial intelligence (AI)



Simulation site: <https://ai-scope.jp/>

"AI SCOPE" is the industry's first service to be able to forecast the effect of renovation using AI based on big data of real estate property information, in addition to forecasting the asset value of owned real estate, future rent, vacancy rate, etc.

By utilizing "AI SCOPE", it is possible to detect current and future issues of owned real estate at an early stage, and to carry out planned real estate management such as timing of rent review and sale.

In addition, by connecting the prediction of the effect of renovation using AI to the renovation service provided by our company, property owners will be able to efficiently increase the property value. (Renovation to fill vacancies: <https://www.casa-inc.co.jp/lp-double/>)

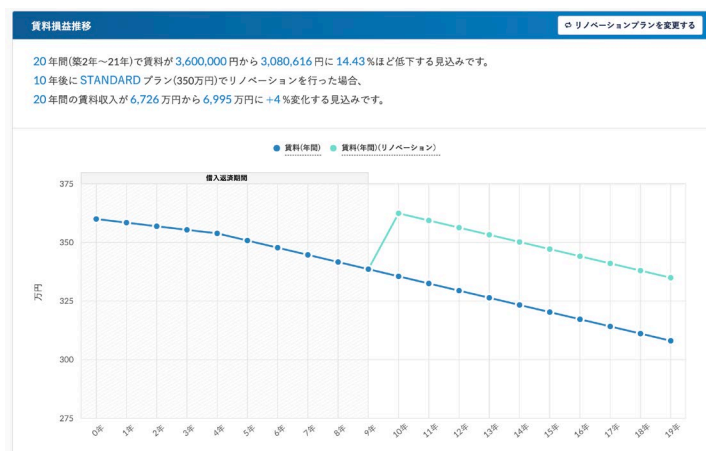
In the future, in addition to forecasting the effects of renovation, we will utilize cash flow diagnosis based on the simulation results of "AI SCOPE" to propose measures to further increase profits and reduce costs in real estate management.

* Various data calculated by "AI SCOPE" are values calculated and analyzed by AI's original algorithm, and Do not guarantee the actual sale price, rent, vacancy rate, etc.

[What AI SCOPE will achieve]

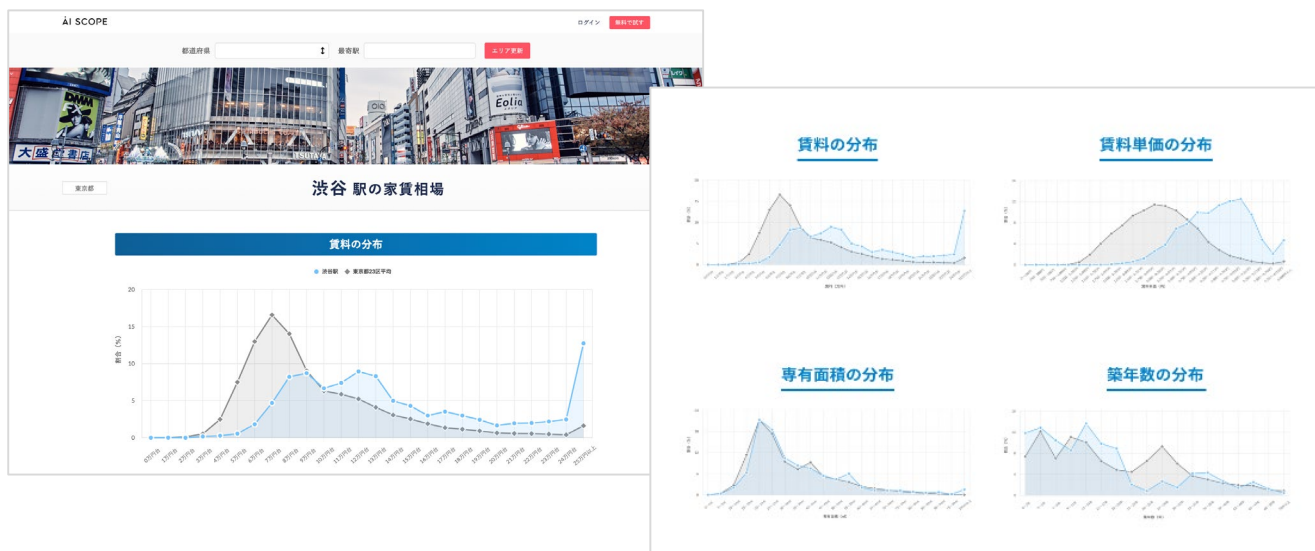
◆ **Analysis of renovation effect, rent decline forecast, vacancy risk, etc.**

It is possible to forecast rent increase and decline due to future renovation, and to analyze vacancy risk by operating profit and loss simulation considering vacancy rate.



◆ **Easy market analysis to analyze the market price in the area around the property**

By simply selecting the prefecture, railway line, and station name, you can analyze the market price of the area around the designated station, such as rent, unit rent, occupied area, and age.



◆ **Can be used as A cash flow forecast and real estate portfolio management tool**

AI analyzes based on big data of real estate property information and predicts future rent decline rate and vacancy rate. You can obtain information that could not be known in rental management so far, and you can use AI SCOPE as a cash flow analysis and real estate portfolio management tool.

<div>AI SCOPE</div> <div>ダッシュボード</div> <div>新規物件登録</div> <div>登録物件一覧</div> <div>ポートフォリオ集</div> <div>アカウント情報</div>	オーナーズ倶楽部 新着記事	
	オーナーズ倶楽部新着記事	
	オーナーズ倶楽部新着記事	
	オーナーズ倶楽部新着記事	
	オーナーズ倶楽部新着記事	
	オーナーズ倶楽部新着記事	
	オーナーズ倶楽部新着記事	
	オーナーズ倶楽部新着記事	
	オーナーズ倶楽部新着記事	
	オーナーズ倶楽部新着記事	
	オーナーズ倶楽部新着記事	
<div>保有物件</div> <div>コーポレート新宿</div> <div>コーポレート新宿</div> <div>コーポレート新宿</div> <div>コーポレート新宿</div> <div>コーポレート新宿</div> <div>コーポレート新宿</div> <div>コーポレート新宿</div> <div>コーポレート新宿</div> <div>コーポレート新宿</div>	保有物件	
	保有物件	
	保有物件	
	保有物件	
	保有物件	
	保有物件	
	保有物件	
	保有物件	
	保有物件	
	保有物件	
	保有物件	
<div>キャッシュフロー表</div> <div>満室想定賃料</div> <div>空室率</div> <div>空室想定賃料</div> <div>運営費用</div> <div>うち管理費・修繕積立金</div> <div>保険料・その他管理費用</div> <div>うち固定資産税・都市計画税</div> <div>うち管理委託費用</div> <div>運営純収益</div> <div>借入利息</div> <div>減価償却費</div> <div>課税所得</div> <div>納税額</div> <div>税引後キャッシュフロー</div>	キャッシュフロー表	
	キャッシュフロー表	
	キャッシュフロー表	
	キャッシュフロー表	
	キャッシュフロー表	
	キャッシュフロー表	
	キャッシュフロー表	
	キャッシュフロー表	
	キャッシュフロー表	
	キャッシュフロー表	
	キャッシュフロー表	
<div>空室率</div> <div>空室想定賃料</div> <div>運営費用</div> <div>うち管理費・修繕積立金</div> <div>保険料・その他管理費用</div> <div>うち固定資産税・都市計画税</div> <div>うち管理委託費用</div> <div>運営純収益</div> <div>運営純収益</div> <div>借入利息</div> <div>減価償却費</div> <div>課税所得</div> <div>納税額</div> <div>税引後キャッシュフロー</div>	空室率	
	空室率	
	空室率	
	空室率	
	空室率	
	空室率	
	空室率	
	空室率	
	空室率	
	空室率	
	空室率	

[Overview of COMPASS Co., Inc.]

Company Name: COMPASS Co., Inc.

Location: 2-6-1 Nishi-Shinjuku, Shinjuku-ku, Tokyo

Business: Providing A real estate management platform

Providing various information infrastructures related to real estate transactions

Consulting business related to real estate management

Capital: 30 Million Yen

Date of establishment: June 28, 2019

[Contact for this release]
Casa Co., Inc. Corporate Planning Office
TEL: 03-6894-1388